



**ADPRO  
Video Central Lite  
(VCL)  
USER GUIDE**

# View Live Video

A shortcut to ADPRO Video Central (VCL) has been placed on your “desktop” screen. Double click the icon to launch the application.



ADPRO Video  
Central 11.03

Video Central Lite screen will appear. Once loaded, two pop-up windows will display. In the *Messenger Service* window click **OK** and in *Video Central Lite: Dongle Required* click **Yes**.

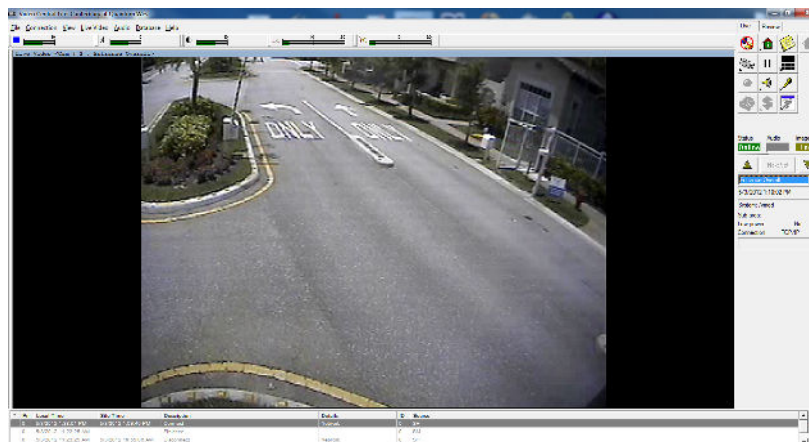
The right side of the screen will contain a series of Control buttons. The diagram below identifies the control buttons and the function of each.

**Note** Holding the cursor over each button will display its function.



To view live video, follow these steps:

1. Click the **Site Acknowledge** button and then the **Site Connect/Disconnect** button.
2. A dialog box will appear with the site(s) available to you. Select the location you wish to display. VCL will display the image of camera 1.

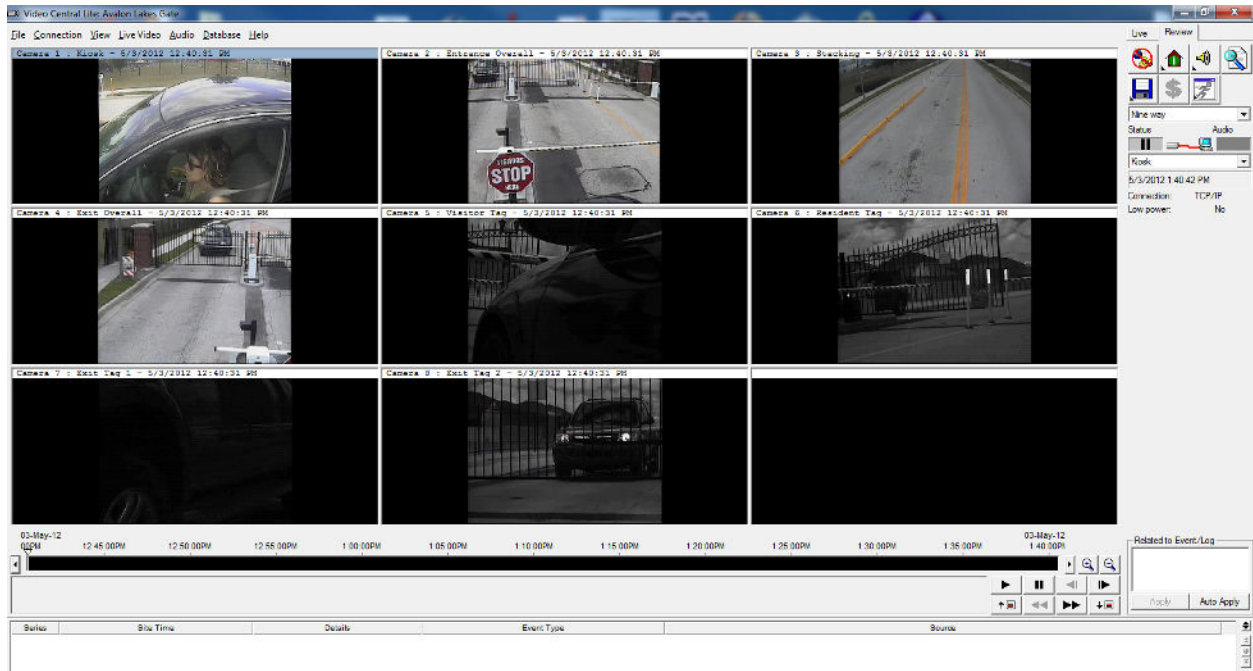


- You can change the display of cameras by clicking and holding the **Guard Tour** button to bring up a list of choices. Please note the window will only display active cameras, for example, if you select 7-way but only have five cameras, only five cameras will be displayed. Conversely, if you select 4-way you would show the first four of five cameras.

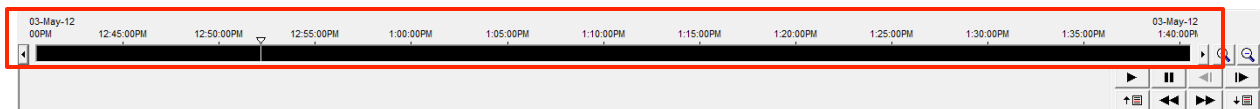
You can select which camera and the quality to be displayed from the pull down under the **Live Video** menu, or by right clicking in the display itself to reveal **Live Video** menu and **Quality**.

## Review Recorded Video

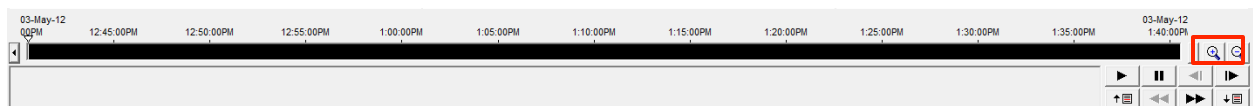
- Click the **Review** tab on the top of the control button grid. All cameras will be displayed.



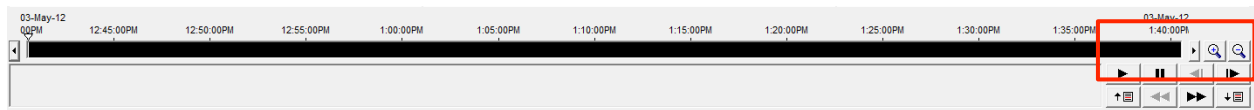
- At the bottom of the window is a Timescale ribbon. On the left side of the ribbon is a scroll button to scroll back in time, and an index mark. You can quickly go to the time frame of interest using these two controls. With the cursor on the index mark, click and hold to move the index backward or forward in time.



- To the right of the Timescale ribbon are two buttons that allow you to narrow or expand the Timescale increments.



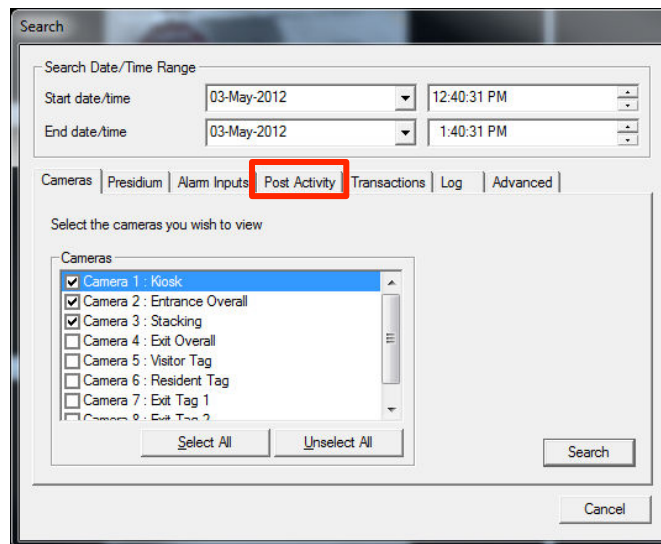
4. Below and to the right of the Timescale ribbon are recorded loop control buttons. The function of each is revealed when you position the cursor over it.



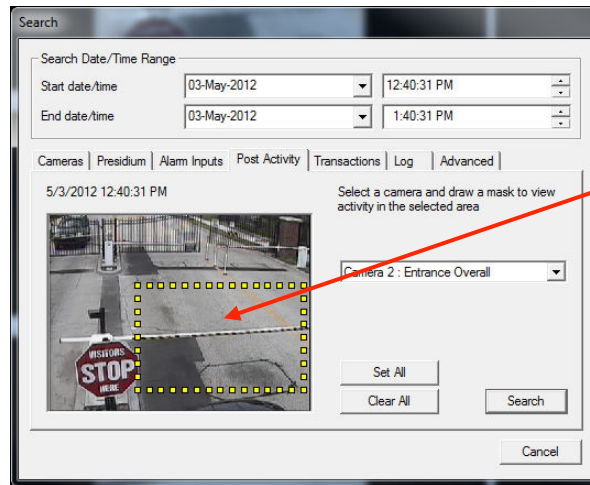
5. If the approximate time of the event is not known (e.g. an event occurred over a span of several days) click the **Perform a Search** button at the upper right button matrix.



6. A search window appears that will enable you to enter a date and time range, and to select the camera(s) of interest. Enter a range in which to perform the search, and select the camera of interest.



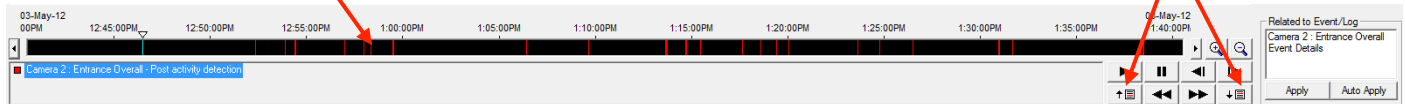
7. The **Post Activity** function helps you to quickly view triggered events by allowing you set event zones.
  - Select a small area to define where the activity occurred. To do so, select the **Post Activity** tab. A pop up window will appear with another video window inside displaying the video from the selected camera.
  - Position the cursor on a corner of an area you wish to use to discriminate events. Press and hold the left mouse button, and drag the cursor to define the area where the event occurred. A series of yellow boxes will outline the area selected.
  - The Timescale ribbon will display vertical hash marks indicating the occurrence of an event in the area that you defined. Click on each to advance to that time period, or use the Next/Previous Event button.




Define the area of interest

Event hash marks

Next/Previous  
Event buttons

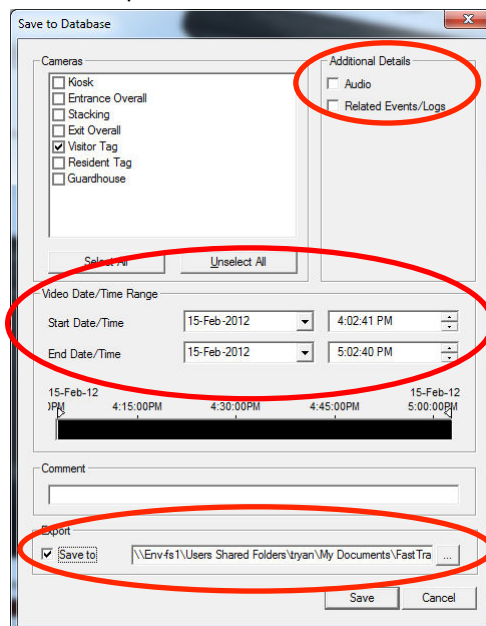


## Saving Recorded Video & Images

1. Once you have found the recorded video of the event of interest, click the Disk icon  to save the video recording.

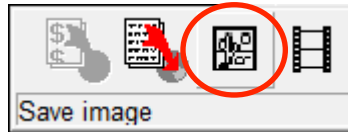
2. The *Save to Database* window will pop up.

- In the **Additional Details** section, uncheck the box next to *Audio* and *Related Events/Logs*.
- In the **Video Date/ Time Range** section, you can down adjust the times more accurately.
- In the **Export** section, place a check in the *Save to* box and click the *ellipsis (...)* to select the location where you would like to export/save the file. Click **Save**.



3. You can also save just an image from the recorded video, for example, a vehicle license plate.

- Once you are at the point within the recording, looking at the image of interest, click **Pause**.
- Click the Disk icon and hold your mouse button down. Then drag your mouse pointer to the Save image icon.



- The *Save As* window will pop up. Select the location where you would like to save the image.
- Click **Save**.

